



**Office of the Monroe County Surveyor**  
**Trohn Enright-Randolph**

Health Services Building  
119 West 7<sup>th</sup> Street  
Bloomington, IN 47404  
Phone: (812) 349-2570

Dear User,

The following images were obtained in 2017 by the Office of the Monroe County Surveyor from the State Imaging and Microfilm Laboratory at the Indiana State Archives. The field notes and plats for Lawrence County are stored on microfilm Reel 1903 at the Indiana State Archives. Each page provided by the State Imaging and Microfilm Laboratory is approximately 18MB. Our office combined the pages by Township & Range and reduced the resulting pdfs. This process may have caused some degradation in quality. We will provide unreduced images of specific pages if required. Please contact us at 812-349-2570 or at [SurveyorsOffice@co.monroe.in.us](mailto:SurveyorsOffice@co.monroe.in.us) to request a higher quality image of any specific page.

The pdfs are bookmarked with the original page numbers as assigned by the State Imaging and Microfilm Laboratory.

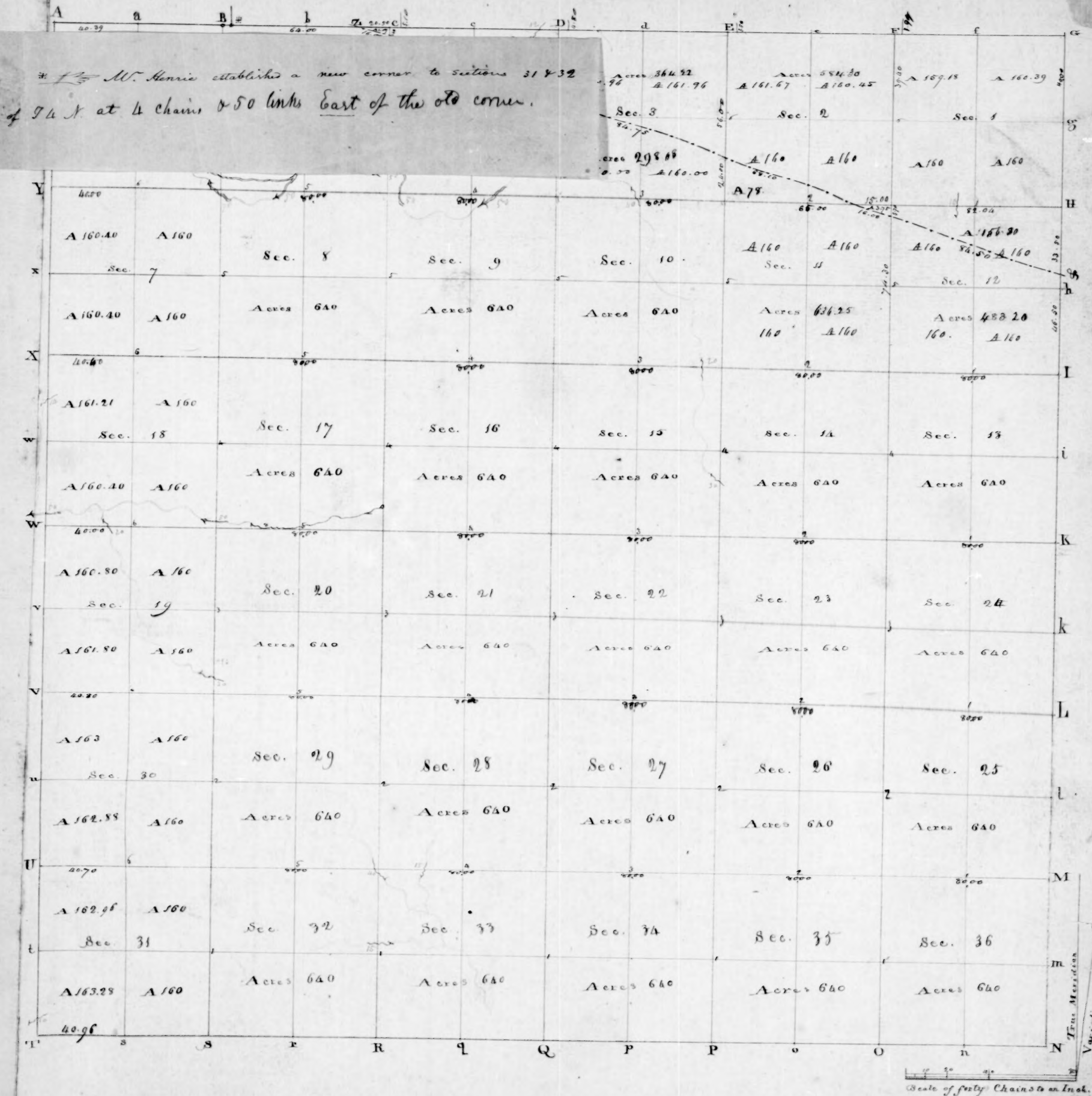
Be prepared to provide the county name, reel number, and the required page numbers when requesting full sized images.

If you would like a DVD of an entire county, please provide us with one DVD per county along with a self-addressed, stamped envelope.

Trohn Enright-Randolph  
Monroe County Surveyor

T 3 N.

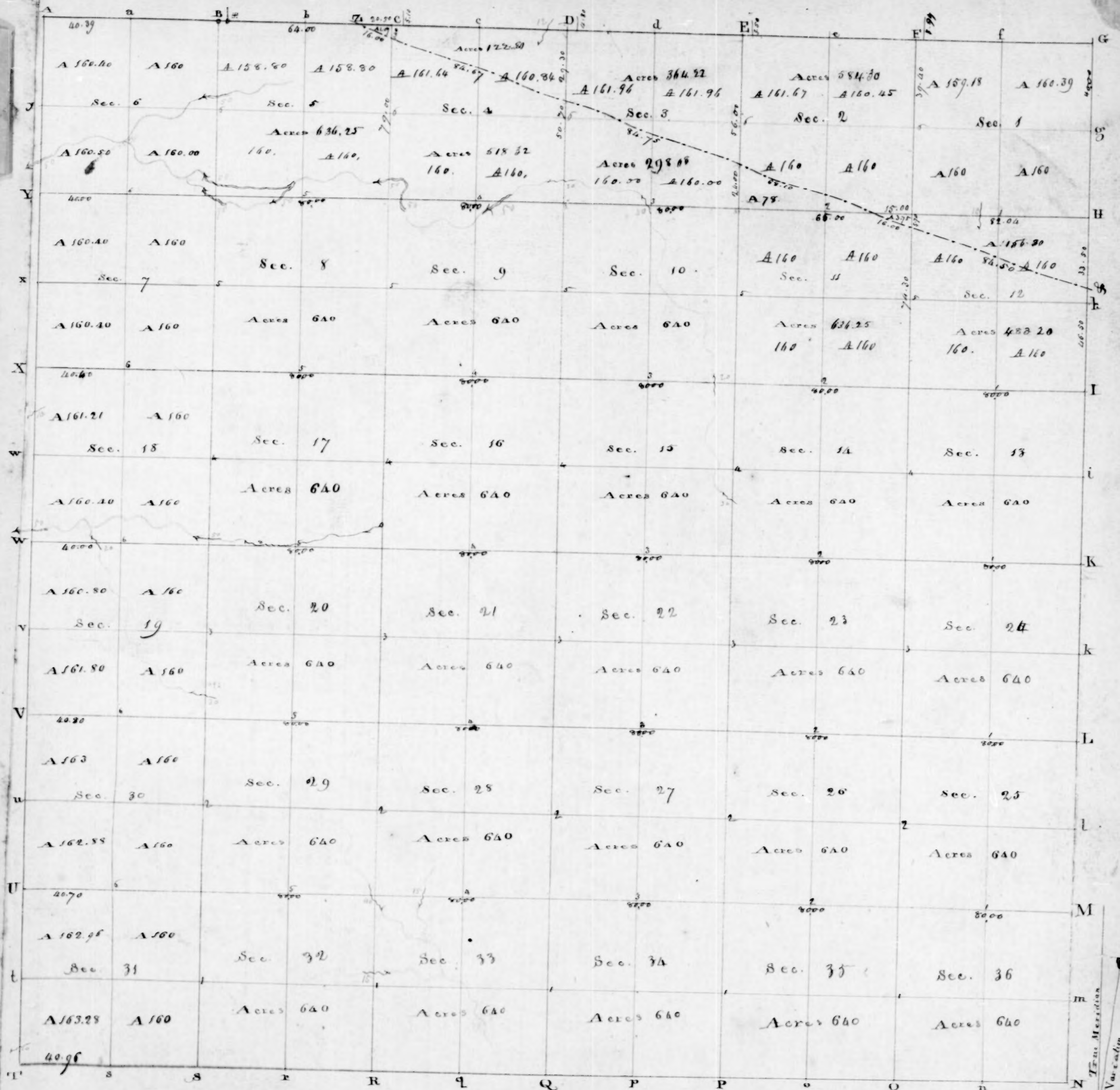
R 2 W.



Township N° II North, Range N° II West of 2<sup>nd</sup> Meridian. Surveyed by Edw.<sup>d</sup> W. Tupper & Augustus Stone, 1805; F. A. Henrie, 1805.

*Permitting of the Soil on the interior Sectional lines*





Township N: 1 North, Range N: 2 West of 2<sup>nd</sup> Meridian. Surveyed by Edw. W. Tupper & Augustus Stone, 1805; F.A. Henric, 1806.

ORIGINAL  
FIELD NOTES

13th Nov 1829



Minutes of Town 3<sup>d</sup>

Francis 2<sup>d</sup> North

Supper & Stone

Record



Next Between Dec 21 & 28  
40 Let 1/4 Sec Port from which a  
Bowl 12 in dr br S 60 W 20 L 4  
& a Bowl 30 in br N 45 E 28  
Lbs -

So Hit Port cor to Dec 20 21 28  
29 -

X Third rate Bowl & Oak Hills

Next Between Dec 20 & 29

40 Let 1/4 Sec Port from which  
a Bowl 6 in br N 64 E 24 L 4  
& a Bowl 11 in br S 69 W 24 L 4

So Hit Port cor to Dec 20 19 29.

20 -

X Third rate Bowl & Oak Hills

Next Between Dec 19 & 30 -

40 Let 1/4 Sec Port from which  
a Bowl 10 in dr br S 42 W  
16 Lbs & a Bowl 9 in dr  
br S 20 E 12 Lbs

50-50 Hit Baiters Port cor to Dec  
24 & 25 in T. 3 R 3 -

3<sup>rd</sup> Rate Bowl & Oak Hills

X  
Next Between Dec 27 34

40 Let 1/4 Sec Port from which  
a Bowl 12 in br S 13 E 16  
L 4 & a Bowl 10 in br S 41 E  
17 Lbs -

So Hit Port cor to Dec 27 28 33  
34 -

X Third rate Bowl & Oak Hills

Next Between Dec 28 & 33

40 Let 1/4 Sec Port from which a  
Sugarbowl 12 in dr br S 63 E 15 Lbs  
& an Elm 6 in dr br N 45 W 13 Lbs  
60 a Run 15 Lbs. 69 South

So Hit port cor to Dec 28, 29, 32 33  
Poor Bowl & Oak Hills

X

12  
 West Between Lee 21 & 28  
 40 Let 1/4 Lee Port from which a  
 Boat 12 m or br S 60 W 20 Lk  
 & a Boat 30 m or br N 45 E 28  
 Lk -

80 Head Port cor to Lee 20 21 28  
 29 -  
 X Third rate Boat & Oak Hills

West Between Lee 20 & 29

40 Let 1/4 Lee Port from which  
 a Boat 6 m or br N 64 E 29 Lk  
 & a Boat 11 m or br S 69 W 24 Lk

80 Head Port cor to Lee 20 19 29

20 -  
 X Third rate Boat & Oak Hills

West Between Lee 19 & 30 -

40 Let 1/4 Lee Port from which  
 a Boat 10 m or br S 72 W  
 16 Lk & a Boat 9 m or  
 br S 20 E 12 Lk

50-50 Hit Baiter Port cor to Lee  
 24 & 25 m T. 3 R 3 -

3<sup>rd</sup> Rate Boat & Oak Hills

West Between Lee 27 34

40 Let 1/4 Lee Port from which  
 a Boat 12 m or br S 13 E 16  
 Lk & a Boat 10 m or br S 16  
 17 Lk -

80 Head Port cor to Lee 27 28 33  
 34 -

X Third rate Boat & Oak Hills

West Between Lee 28 & 33

40 Let 1/4 Lee Port from which a  
 Sugar tree 12 m or br S 63 E 15 Lk  
 & an Elm 6 m or br N 75 W 13 Lk  
 60 a Run 15 Lk. by South

80 Head Port cor to Lee 28 29 32 33  
 Poor Boat & Oak Hills



4  
Nest Between Lee 24 & 32  
1- a small Quail by South  
40. Set  $\frac{1}{4}$  Lee post from which  
a ~~meat~~ 16 in dr br N 25 W 24  
Lbs. La Brest 6 in dr br S 52 E  
16 Lbs -

So Hit Post cor to Lee 29 30 31  
32  
Thud Rate Brest & Oak hills  
X

Nest Between Lee 30 & 31  
40. Set  $\frac{1}{4}$  Lee post from which  
a W Oak 8 in dr br N 28 E  
& an Elm 12 in br S 5 E 15 Lbs

So hit Barbours Post cor to  
Lee 25 36 in T 3 R 9  
Poor barneny hills - burst  
saplings, Bours  
X

Nest Between Lee 24 & 25  
40. marked  $\frac{1}{4}$  Lee? Post on a White  
Oak 16 in diameter  
So Hit Post cor to Lee 24, 25 23  
526 -

Thud rate Brest & Oak Hills  
X

Nest Between Lee 23 & 26  
40. marked  $\frac{1}{4}$  Lee? Post on a  
White Oak 12 in. Diam,  
So Hit Post cor to Lee 22 23  
26 & 27

X 3<sup>d</sup> Rate Brest & Oak Hills

Nest Between Lee 22 & 27  
40 Set  $\frac{1}{4}$  Lee post from which  
a Red Oak 16 in dr br N 41 E 13  
Lbs 2<sup>nd</sup> a W Oak 20 in br S 78  
W 30 Lbs

So  
6

Hit Port cor to Sec 21 22 27  
28 -  
2<sup>d</sup> & 3<sup>d</sup> rate. Beech & Oak  
Hill land &

North On R line E. of Sec 24

34 28 a W Oak 24 mi dr

40-2 Set 1/4 Sec Port from which a

Poplar 20 mi dr S 83 E 21 1/4  
& a Beech 6 mi dr N 51 W 23 1/4

57, 65 a W Oak 18 mi dr

So - Set Port cor to Sec 13 & 24 from  
which a Beech 6 mi dr N 29 W 22  
& a Beech 18 mi dr N 63 E 32  
Lbs -

✓ Sec 2 & 3 rate Beech & Oaks  
Upland -

North - East of Sec 13 on R line

25 60 a Beech 18 mi dr

40 - Set 1/4 Sec Port from which a

Gum 20 mi dr South 29 lbs  
and a Dogwood 6 mi dr S 82 E 13 lbs  
✓

63.36 a Poplar 40 mi dr

So - Set Port cor to Sec 13 & 12 from  
which a Beech 16 mi dr N 22  
W 50 lbs - & a W Oak 18 mi dr  
N 76 E 35 Lbs -

2<sup>d</sup> & 3<sup>d</sup> rate upland.

Beech Poplar Oaks -

North On R line East of Sec 12

37 13 a White Oak 14 mi dr

40 - Set 1/4 Sec Port from which a  
Beech 18 mi dr N 81 W 27 lbs  
& a Sugar tree 12 mi dr N 37 E 28  
lbs

46-50 Street Treemans line & Set Port  
from which a Beech 14 mi dr S 41 W  
26 lbs - & a Sugar tree 11 mi dr S 3  
E. 16 lbs -

just a 2<sup>d</sup> rate upland, Oak Poplar Beech  
Sugar tree +

North Between Sec 25 & 26

25 60 a W Oak 30 mi dr

40 Set 1/4 Sec Port from which

White Oak 12 in Dr Cr N 13 W  
3 1/2 lbs & a Branch 10 in Dr Cr  
1 1/2 8 10 lbs -

60 a Branch 18 in

80 L. Port Cr to L. 23 24 25 26  
from which a Branch 10 in Cr  
22 23 24 lbs & a Branch 10 in Cr  
1 1/2 8 10 12 lbs

3' & 3' rate hickory upland

Poplar, Junco Oak & Branch

North Between L. 23 & 24

40 L. 7 1/2 in Port from which  
a Hickory 30 in Cr 1 1/2 6 6 6  
5 lbs & a Poplar 10 in 2 6  
1 1/2 12 26 lbs -

5750 a Branch 10 in Dr

80 L. Port Cr to L. 13 14  
23 & 24 from which a Poplar  
10 in Dr 1 1/2 40 6 15 lbs &  
a Oak 30 1 23 1/2 15 lbs  
3' & 3' rate Branch & Oak hills

North Between L. 13 & 14

9150 a Hickory 15 in Dr

40 March 3 1/2 L. Port Cr a Branch  
10 in Dr

4550 a Poplar 10 in Dr

80 L. Port Cr to L. 11 12 13 &  
from which a Branch 10 in  
Dr Cr 1 1/2 8 1/2 3 1/2 lbs & a Branch  
14 in Dr Cr N 1/2 2 36 lbs

1' & 2' rate hills, Branch  
Oak Poplar &

North Between L. 11 & 12

24 1/2 a Poplar 12 in Dr

250 L. to L. Port from which a  
Oak 15 in Dr 1 1/2 69 8 14 lbs & a  
Oak 12 in Dr N 10 8 14 lbs &

7500 Branch Poplar from L. 11 & 12 from which  
a Oak 10 in Dr 1 1/2 68 11 23 lbs  
a maple 10 in Dr 1 1/2 21 8 2 1/2

Only rate upland. Branch  
Branch Branch Branch Oak



8. White Oak 12 in Dr to N10W  
36 Lbs. & a Beech 12 in Dr to  
S 68 E 10 Lbs -

61- a W Oak 18 in

80- Set Post cor to Sec 23 24 25 26  
from which a Beech 16 in Dr N  
92 W 58 Lbs. & a Beech 10 in Dr  
to S 88 W 43 Lbs

2<sup>d</sup> & 3<sup>d</sup> rate timber upland

Poplar Gum Oak & Beech

North Between Sec. 23 & 24

40- Set 1/4 Sec Post from which  
a Hickory 30 in Dr to N 65 E  
5 Lbs. & a Dogwood 10 in Dr to  
S 65 W 26 Lbs -

57/50 a Beech 16 in Dr

80- Set Post cor to Sec 13 14  
23 & 24 from which a Dogwood  
10 in Dr to N 40 E 15 Lbs &  
a Oak 30. S 43 W 18 Lbs

2<sup>d</sup> & 3<sup>d</sup> rate Beech & Oak hills

North Between Sec. 13 & 14 9

21 50. a Hickory 15 in Dr

40- Marked 1/4 Sec Post on a Beech  
10 in Dr

56/45. a Poplar 36 in Dr

80- Set Post cor to Sec 11- 12 13 &  
14- from which a Beech 14 in  
Dr to S 78 W 34 Lbs. & a Beech  
14 in Dr to N 72 E 36 Lbs

1<sup>d</sup> & 2<sup>d</sup> rate hills, Beech  
Oak. Poplar X

North Between Sec 11. & 12

25 15 a Sugar tree 12 in Dr

40- Set 1/4 Sec Post from which a W  
Oak 15 in Dr to S 69 E 14 Lbs. & a  
W Oak 12 in Dr to N 10 E 14 Lbs,

74 30- Shuck Freeman's line & set  
Post cor to Sec 11 & 12 from which  
a Beech 12 in Dr to N 68 W 28 Lbs  
& a maple 10 in Dr to S 21 E 31 Lbs

Timber rate upland, Sinkholes -

Timber Beech Sugar tree Oak

West  
40 Between Lee 12 & 13  
Mark'd  $\frac{1}{4}$  Section Post on  
a Poplar 7 inches Di<sup>m</sup> in  
a Poplar thicket on a ridge  
So. Hot Post cor to 12. 13. 11. 14  
Thin upland - a few Oak  
Beet & Poplar

West.  
40 Between Lee 26 & 35  
mark'd  $\frac{1}{4}$  Section Post on a  
Cumn 24 inches Diam<sup>t</sup>  
So. Hot Post cor to Lee 25 26  
35 & 36 -  
3<sup>d</sup> rate upland. Beet  
Oak. Cumn. Huby

West  
40 West<sup>n</sup> Lee 18 & 24  
Set  $\frac{1}{4}$  Sec Post from which a  
Beet 12 in in br N 35 E 15 L<sup>ts</sup>  
La W Oak 15 in in N 12 W 16

So. Hot Post cor to Lee 13 14 23 & 24  
West of 3<sup>d</sup> rate Hill Land, -

West Between Lee 14 & 23

40 Set  $\frac{1}{4}$  Sec Post from which  
a maple 10 in dbh S 85 W 36  
La Beet 12 in in br N 4 W 30  
L<sup>ts</sup> -

So. Hot Post cor to Lee 14 15  
22 - 23 -  
3<sup>d</sup> rate Oak & Baywood up  
land

West Between Lee 15 & 22

40 Set  $\frac{1}{4}$  Sec Post from which  
a Beet 18 in in br S 30 W 9  
L<sup>ts</sup>. La Beet 20 in in br N 40  
W 20 L<sup>ts</sup> -

So. Hot Post cor to Lee 15 16  
21 & 22 -  
Flat Oak Ridge.

West<sup>12</sup> Between Sec 16. & 20  
 40 Lot  $\frac{1}{4}$  Sec P. from which  
 a bush 6 in or less N3W by  
 Lts. La Bush 12 in S. 6 W 24  
 Lts -  
 So Hit Post cor to Sec 21 20  
 16. & 17 -  
 2<sup>d</sup> & 3<sup>d</sup> rate Bush & Oak  
 Hills - X

West Between Sec 17. & 20  
 40 Lot  $\frac{1}{4}$  Sec Port from which  
 a Bush 8 in or less N36W 11 ft  
 & a Bush 6 in or less S48E 7 ft  
 41. a Brook 8 Lts. by westerly  
 line kept on S side of same cut  
 $\frac{3}{4}$  mile  
 So Hit Post cor to Sec 16. 17. 20 & 21  
 2<sup>d</sup> rate land. Oak Bush Poplar  
 X

West Between Sec 18 & 19  
 40 marked  $\frac{1}{4}$  Sec Port on a Bush  
 10 inches diam<sup>13</sup>  
 52 a cut 20 Lts bearing N. W.  
 So Hit Barbours Port - cor to  
 Sec 13 & 14. in Town 2 or 3  
 mostly cut bottom Bush  
 & Ash Timber

West Between Sec 11. & 14  
 40 Lot  $\frac{1}{4}$  Sec Port from which a  
 Bush 16 in or less N42W 20 & a  
 Bush 14 in or less N69E 34 & 14  
 So Hit Post cor to Sec 10 11. 14. 15  
 2<sup>d</sup> & 3<sup>d</sup> rate Bush & Oak Hills  
 X

West Between Sec 10. & 15.  
 10 50. a cut 20 Lts - by North  
 40 marked  $\frac{1}{4}$  Sec Port on a Bush  
 20 inches diam<sup>14</sup>



14  
So Thurt Post cor to Lee 9, 10  
15 & 16 -

X 3<sup>rd</sup> Rate Bush Hills

Post From ~~Freeman's line~~  
between Lee<sup>2<sup>nd</sup></sup> & 11

10.00 Set 1/4 Sec Post from corner  
of 12 Bush 14 N 1/4 Sec 8,  
20 Sec 20 Bush 23 in by  
N 75 E 54 -

65.1 Thurt Post ~~cor to~~ Lee ~~2<sup>nd</sup>~~  
~~Set 1/4~~ At Bush 14 Sec 8, 20 Sec 23  
N 75 E 54  
2<sup>nd</sup> rate up land, Sinko -  
Timber Bush Oak &c